

### Product Description

Nordeck® is a long-spanning commercial and residential insulated roof panel system that combines roofing, EPS-FR insulation and a pre-painted ceiling in one durable, functional and attractive roof panel. This all-in-one roofing solution is manufactured using Australian-made COLORBOND® steel for durability and is installed in a variety of applications including educational facilities, multi-residential housing and retail facilities and is tested for use in cyclonic regions.

| Panel Properties                                |       |       |       |       |       |       |       |
|---|-------|-------|-------|-------|-------|-------|-------|
| Panel Thickness (mm)                            | 50    | 75    | 100   | 125   | 150   | 175   | 200   |
| Typical Mass (kg/m²)                            | 10.6  | 10.9  | 11.3  | 11.6  | 12.0  | 12.3  | 12.7  |
| SL Grade Declared λ (W/m.K) at 23°C             | 0.042 | 0.042 | 0.042 | 0.042 | 0.042 | 0.042 | 0.042 |
| SL Grade Declared R-value (m²K/W) at 23°C       | 1.20  | 1.80  | 2.40  | 3.00  | 3.60  | 4.25  | 4.85  |
| SL Grade Total R-value (m²K/W) at 15°C (Winter) | 1.40  | 2.03  | 2.65  | 3.27  | 3.90  | 4.52  | 5.15  |
| SL Grade Total R-value (m²K/W) at 30°C (Summer) | 1.38  | 1.98  | 2.57  | 3.17  | 3.76  | 4.35  | 4.95  |

Note: The Declared R-value is at 23°C in accordance with AS/NZS 4859.1:2018 & AS/NZS 4859.2:2018.

### Span Table

NON-CYCLONIC REGION A&B (ROOF APPLICATIONS ONLY)

SL Grade EPS-FR Core / 0.42mm Hi-tensile External / 0.6mm Internal Steel Skins.  
Maximum uniformly distributed ultimate wind load (kPa) for the given span:

| Single Span, wind pressure acting outwards |                      |      |      |       |       |       |       |
|--|----------------------|------|------|-------|-------|-------|-------|
| Span (mm)                                  | Panel Thickness (mm) |      |      |       |       |       |       |
|  | 50                   | 75   | 100  | 125   | 150   | 175   | 200   |
| 1500                                       | 5.16                 | 7.70 | 9.41 | 10.98 | 13.26 | 15.51 | 17.81 |
| 2700                                       | 2.35                 | 3.74 | 4.63 | 5.55  | 6.78  | 7.99  | 9.28  |
| 3900                                       | 1.28                 | 2.00 | 2.55 | 3.11  | 3.67  | 4.23  | 4.79  |
| 5100                                       | -                    | 1.21 | 1.53 | 1.86  | 2.19  | 2.52  | 2.85  |
| 6300                                       | -                    | -    | 1.04 | 1.25  | 1.47  | 1.69  | 1.91  |
| 7500                                       | -                    | -    | 0.76 | 0.92  | 1.07  | 1.22  | 1.38  |
| 8700                                       | -                    | -    | -    | -     | 0.82  | 0.94  | 1.05  |

| Multi-span, wind pressure acting outwards |                      |      |      |      |      |      |      |
|---|----------------------|------|------|------|------|------|------|
| Span (mm)                                 | Panel Thickness (mm) |      |      |      |      |      |      |
|   | 50                   | 75   | 100  | 125  | 150  | 175  | 200  |
| 1500                                      | 4.15                 | 5.90 | 7.61 | 7.74 | 7.74 | 7.74 | 7.75 |
| 2700                                      | 2.07                 | 2.91 | 4.00 | 4.35 | 4.35 | 4.35 | 4.35 |
| 3900                                      | 1.17                 | 1.72 | 2.41 | 2.95 | 3.04 | 3.04 | 3.05 |
| 5100                                      | -                    | 1.11 | 1.58 | 1.98 | 2.35 | 2.35 | 2.36 |
| 6300                                      | -                    | -    | 1.10 | 1.40 | 1.77 | 1.93 | 1.93 |
| 7500                                      | -                    | -    | -    | 1.03 | 1.31 | 1.57 | 1.64 |
| 8700                                      | -                    | -    | -    | -    | -    | 1.20 | 1.43 |



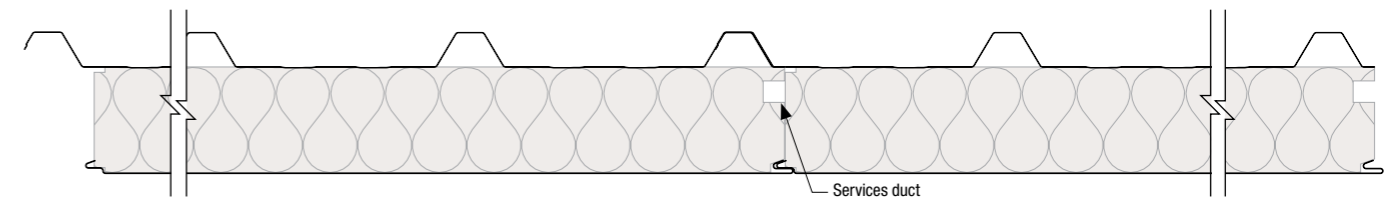
Colorbond®

|                         |   |
|-------------------------|---|
| Core                    | EPS-FR<br>(Expanded Polystyrene with fire retardant)  |
| Width (cover mm)        | 1000  |
| Thickness (mm)          | 50, 75, 100, 125, 150, 175, 200   |
| Length                  | Up to 24m (check for availability)  |
| External Material       | 0.42mm G550 COLORBOND® steel  |
| External Finishes       | High-Rib Trapezoidal Profile  |
| Exterior Colour Options | Classic Cream™, Surfemist®, Paperbark®, Shale Grey™, Dune®, Pale Eucalypt®, Manor Red®**, Basalt®^, Woodland Grey®^** |
| Internal Material       | 0.6mm G300 COLORBOND® steel   |
| Internal Finishes       | Plain, VJ   |
| Interior Colour Options | Classic Cream™, Surfemist®  |
| Pitch                   | 2 degree minimum  |
| Paint System            | AS/NZS 2728 & AS 1397   |
| Acoustic Properties     | Rw 24 - 25 depending on thickness   |
| Material Group Numbers  | Group 1 & 2   |
| Fire Hazard Properties  | AS/NZS 1530.3   |
| Ignitability Index      | 0   |
| Spread of Flame Index   | 0   |
| Heat Evolved Index      | 0   |
| Smoke Index             | 2-3   |
| SMOGR <sub>RC</sub>     | < 100   |

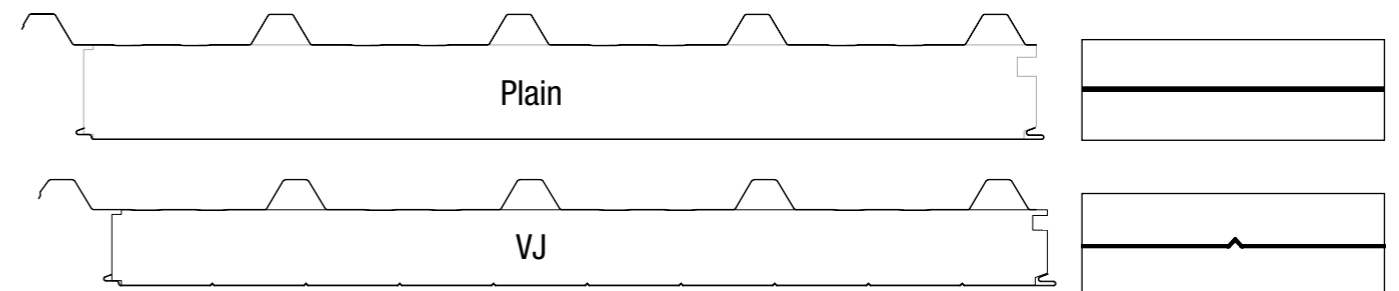
\*\* Limited availability.  
^ Darker colours warranted for use in limited regions. Check with your local Nordeck® dealer for more information.  
a. AS5637.1 / AS ISO 9705 - BCA Group Number  
EPS-FR steel skinned insulated building panels conform to the requirements of the BCA as either Group 2 or Group 1 depending on panel thickness and construction details. Refer Norfoam® for more information.

SPAN TABLE NOTES:  
1. Extended span tables including cyclonic regions C&D, multi-span, wind pressure acting inwards and 0.5mm interior skin are also available. Refer Norfoam®.  
2. Fixing with 14g tek screws (or equivalent) at each rib are required.  
3. Pressures specified are for wind gusts only per AS/NZS 1170.2.  
4. Deflection limit of span/150 applies, and in accordance with Serviceability Limit State criteria per AS/NZS 1170.0 - TABLE C1.  
5. Self weight of the panel has been allowed for, plus an allowance of max 25kg/m² for light duty fittings (lights, etc.). No other dead loads permitted.  
6. Non-trafficable maintenance access (concentrated load) of 140kg on any span has been allowed for, in roof pans only. Avoid stepping on the ribs.  
7. Distributed live load of 0.25kPa (as per AS/NZS 1170.1) has been allowed for. Norfoam® tests comply with details outlined in AS 4040.0, AS 4040.1, AS 4040.2, AS 4040.3, AS 1562.1 and AS/NZS 1170.1.  
8. Generic engineering certification of the Nordeck® Patio System is available for residential patios.

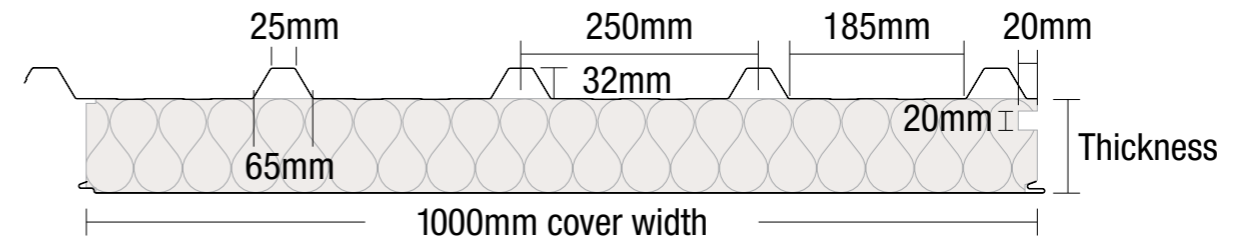
### Joint



### Profiles



### Dimensions



### Norfoam® Network

TOWNSVILLE  
123 Enterprise St, Bohle, QLD, 4818  
Ph: (07) 4774 4983

To connect to your nearest Norfoam® branch simply call (07) 4774 4983 or visit [www.norfoam.com.au](http://www.norfoam.com.au)

Norfoam Pty Limited. ABN 44 096 402 934. The manufacturer reserves the right to change the specification without notice. Norfoam®, Nordeck®, are trademarks of Norfoam Pty Limited. BlueScope, COLORBOND® Intramax™ and colour names are trademarks of BlueScope Steel Limited. The colours shown in this publication have been reproduced to represent actual product colours as accurately as possible. However, given printing limitations, we recommend checking your chosen colour against an actual sample before placing orders. This advice is of a general nature only. Designers must provide for adequate structural performance and other Building Code requirements. This information is subject to change. Refer to Norfoam® website for latest version. Consult Norfoam® for your application. NOR0126 Tech Data Sheet - NorDeck v1.

